

# Characterization Worksheet & Poster

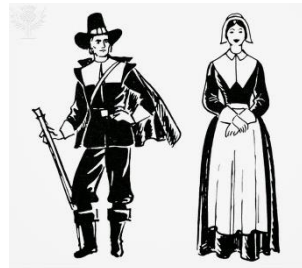
## Evaluate Two Characters

Choose two characters from The Crucible using act one and act two. You must use specific examples from the text and include page numbers. You must include quote(s) and create an image that is close to the description of that character (some characters don't have a physical description, so just create what you assume they might look like. You also want to include Puritan clothing.

**Information:** Specific Quotes and Evidence: **20 Each**

**Image of character:** Colored and includes some specific Puritan wear (bonnet, hat, puritan dress): **5 Each**

Puritan clothing examples:



## Poster:

Create a characterization poster on one of the characters you evaluated from act one and act two. You may choose however you want to present the information, you do not have to follow the layout of the worksheet just the information. You must include at **least two quotes** and key information about the **characters speech, thoughts, effect on others, actions, and looks/physical description.**

**Information:** Two Quotes and Key Information: \_\_\_\_\_/20 Points

**Image of Character:** Color and includes specific Puritan Wear: \_\_\_\_\_/ 10 Points

**Due Wednesday, November 29<sup>th</sup> 2017**